

## MYCOLOGY

This section deals with the fungal species that occur in the forests and have an important role to play in the growth of trees. It includes both harmful and useful fungi.



## NON TIMBER FOREST PRODUCTS

These sections comprise the display of entire range of useful non timber forest products that are economically important and are arranged in distinct categories. Gums and Resins, Oils, Tars, Drugs, Tans, Dyes, Rubber and Lacs are displayed in these categories.

## ETHNOLOGY

It deals with the physical, social and cultural aspects of hill tribes. Different types of ornaments worn by the jungle tribes, models of tribal huts, hunting weapons including the tiger spears are displayed here. A rich collection of the armaments used by Forest department personnel in earlier dates including bayonets, rifles and carbines are also displayed.



## WOOD CRAFTS

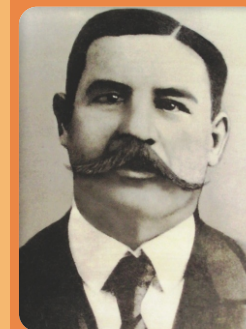
Various articles that are manufactured with forest products including Bobbins & Shuttles, picker arms, and diaper items, skittle balls, baton, hand sticks and carving items are displayed in this category.

### WORKING HOURS

9.00 AM to 1.00 PM & 2.00 PM to 5.00 PM  
on all Working Days  
(Except Saturdays, Sundays and  
Central Govt. Holidays)  
Museum Phone Number : 0422 - 2450307

### ENTRY FEE

Adult (Above 18 Yrs) : ₹ 20/-  
Children (From 2 Yrs to 18 Yrs) : ₹ 10/-



H.A. GASS



## GASS FOREST MUSEUM

## HISTORY

The Gass Forest Museum was established by Horace Archibald Gass, a British Forest Officer. It was opened by Lord Amthill, the then Governor of Madras Presidency in 1902. In recognition of the tireless efforts of H.A. Gass in establishing this museum, the Govt. named it as "Gass Forest Museum" on 18.9.1905. The present museum building was opened by Lord Pentland, the then Governor of Madras on 14.10.1915. This is the largest and oldest Forest museum in our country.

**Institute of Forest Genetics and Tree Breeding  
Coimbatore**

For further information:



**The Director**  
**Institute of Forest Genetics and Tree Breeding**  
(Indian Council of Forestry Research and Education)  
P.B. No. 1061, R.S. Puram P.O.,  
Coimbatore-641002, Tamilnadu, INDIA  
Phone: +91 422 2484100, 2484101, Fax: +91 422 2430549  
Email: [dir\\_ifgtb@icfre.org](mailto:dir_ifgtb@icfre.org)  
Website: [http://ifgtb.icfre.gov.in/gass\\_museum/gass\\_home.html](http://ifgtb.icfre.gov.in/gass_museum/gass_home.html)



Prdag Print 098432 73994

## Exhibits displayed in Gass Forest Museum

There are more than 4000 exhibits housed under following categories:

- Wildlife
- Botany
- Timber
- Non-timber forest produces
- Geology
- Ethnology
- Mycology
- Forest Engineering
- Entomology
- Wood crafts



### WILDLIFE



antlers and trophies of various deer species, skulls of few wild animals are also displayed.

The museum houses a rich collection on wildlife. The terrestrial fauna includes a magnificent stuffed Bison presented in 1956 by the Raj Pramukh of Mysore, Stuffed leopard, Indian gazelle, Monkeys and Nilgiri langur. The skeleton section has full skeleton of elephant and bull. Foetus of elephant, eggs of different birds including the Ostrich, the world's largest egg,



### TIMBER

The museum has collections of all important timber species found in India. Notable among the exhibits is a 456 yrs old cross section of Teak in a girth of 5.7 mtrs and a massive Sandal tree weighing 1.75 tonnes and 10.2 mtrs in height. More than 600 timber exhibits including Timber panels, Handspecimens, Sections and Cylindrical logs of important timber species are displayed. A timber library that displays information on 30 important Indian species having diverse enduses is also included.



### FOREST ENGINEERING

Different models of timber stacking, timber seasoning, Forest bridges and timber houses are displayed.



### BOTANY

A rich collection of this section includes the fruits and seed carpellarium, barks, roots, leaves and fibres of important forestry species. Different species of bamboo and canes are also found their place.



### ENTOMOLOGY

A rich collection of the insect world displaying the important classes of both useful and harmful insects associated with the forests which constitutes an important component of bio diversity is exhibited. Specimens of commercial importance timber infected with various forest insect pests are exhibited. A good collection of butterflies and moths are the main attraction of this section.



### GEOLOGY

More than 300 collections from various parts of the world including the rock, mineral wealth and soil formations from forests are housed here. Notable being the collection of different kinds of Mica found in nature.

